



Spelling Tests

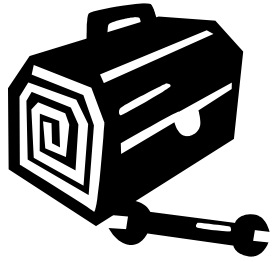
Year 3: In the Garden Shed



In the Garden Shed

Name:

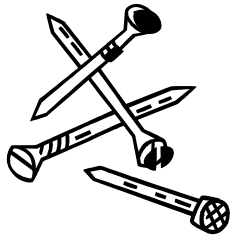
Score:



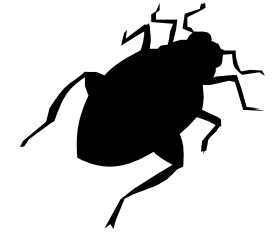
1.



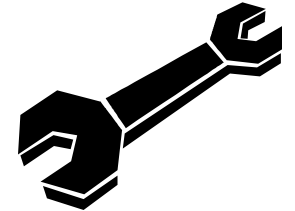
2.



3.



8.



7.



4.



5.



6.

1. Growing Tomatoes

How to sow: Fill a pot with compost, _____ firm the surface and _____ . Thinly scatter the seeds and cover with a small _____ of compost.

2.

Handling Seeds: _____ they are large enough to hold, _____ pick out a single seedling, bringing as many roots as possible with it. Lift the seedling gently as it is easily _____

3.

Pricking Out: Take the seedling and plant it in its _____ pot of compost. Gently put it into position and water it. Place in a _____, well-lit _____ .

4.

Growing On: When the roots start to come _____ the drainage holes, _____ the plant into a _____ pot. Be careful not to damage the roots. If the plant is very tall, tie a cane to it for support.

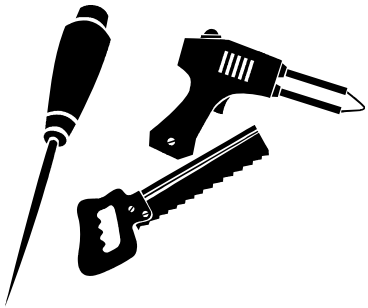
In the Garden Shed

Name:

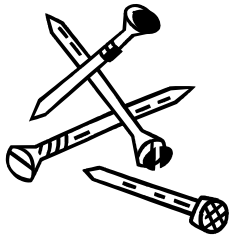
Score:



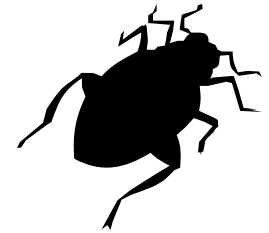
1. box



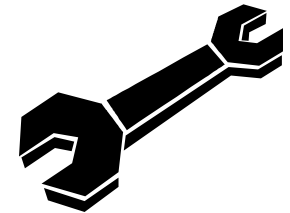
2. tools



3. nails



8. beetle



7. spanner



4. boot



5. spade



6. watering

1. Growing Tomatoes

How to sow: Fill a pot with compost, **lightly** firm the surface and **water**. Thinly scatter the seeds and cover with a small **amount** of compost.

2.

Handling Seeds: **Once** they are large enough to hold, **carefully** pick out a single seedling, bringing as many roots as possible with it. Lift the seedling gently as it is easily **damaged**.

3.

Pricking Out: Take the seedling and plant it in its **own** pot of compost. Gently put it into position and water it. Place in a **warm**, well-lit **location**.

4.

Growing On: When the roots start to come **through** the drainage holes, **transfer** the plant into a **bigger** pot. Be careful not to damage the roots. If the plant is very tall, tie a cane to it for support.